



Your support can help to make Junction Trails Park a reality.

Please join us at our weekly meetings or make contributions to either fund:

The Junction Trails Park or **Milford High School Athletic Memorial**

c/o National Bank & Trust
735 Lila Avenue
Milford, Ohio 45140

All donors will be publicly recognized on scrolls to be located permanently at The Junction Trails Building or the Milford High School Memorial.

For further information, please contact:

Steve Boller
405 Mill Street
Milford, Ohio 45140
513 832-7703
wsb@mikeboller.com



Buckeye Trail *Sea to Sea Route*
Ohio to Erie Trail *North Country Trail*
Underground Railroad Cycling Route *American Discovery Trail*
Little Miami Scenic Trail *Little Miami Scenic River*

Forward-thinking ideas and a global perspective will allow Junction Trails Park to create jobs, produce clean energy, and be fully self-sustaining, costing the taxpayers of Milford nothing but benefitting everyone. This public park will dramatically enhance the scenic quality of the Little Miami River and increase traffic to downtown Milford businesses.

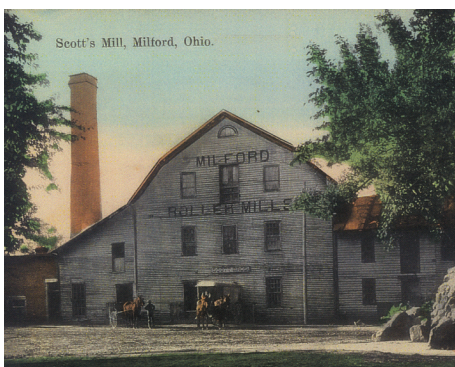
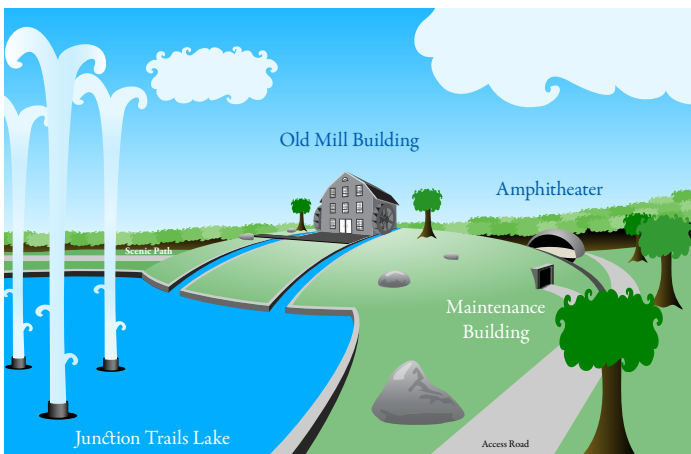
Milford stands alone in this crucial and unique fact: it is the only U.S. community that has eight different national, state, and local trails converging within its city. Milford's exclusive location at the junction of these historic trails has stimulated the interest of both the state and federal government in helping to fund this park.



Final conceptual drawing of the octagonal Junction Trails Building. The eight sides of the building celebrate the eight trails meeting in Milford, with each entrance dedicated to an individual trail and its history.



UNCTION TRAILS PARK IS NOT JUST A PARK—it is a bold plan to ensure future prosperity for the city of Milford.



Conceptual sketch (above) of the northern portion of Junction Trails Park with Junction Trails Lake (inspired by Eden Park's Mirror Lake), the Amphitheater, and the Mill Building, a restaurant for fine dining that will be modeled after the old Scott's Mill that burned down on New Year's Day in 1920 (left).

Visitors to Junction Trails Park will experience the natural beauty of Old Milford while enjoying the variety of attractions that the park will offer. This pioneering recreation complex will include a scenic walkway, campgrounds, hotel, restaurant, botanical gardens, amphitheater, and the centerpiece of the park, the Junction Trails Building and Educational Campus.

A groundswell of Milford residents have begun to mobilize, energized by the idea of Junction Trails Park. The timing for this park could not be better. Contemporary political issues—like energy and healthcare concerns, global warming, and economic recession—combined with the ever-growing popularity of hiking and biking trails across our country have created the perfect setting to bring Junction Trails Park to fruition. This park will blaze a new trail for Milford's future, ushering in an era of progress for its people.